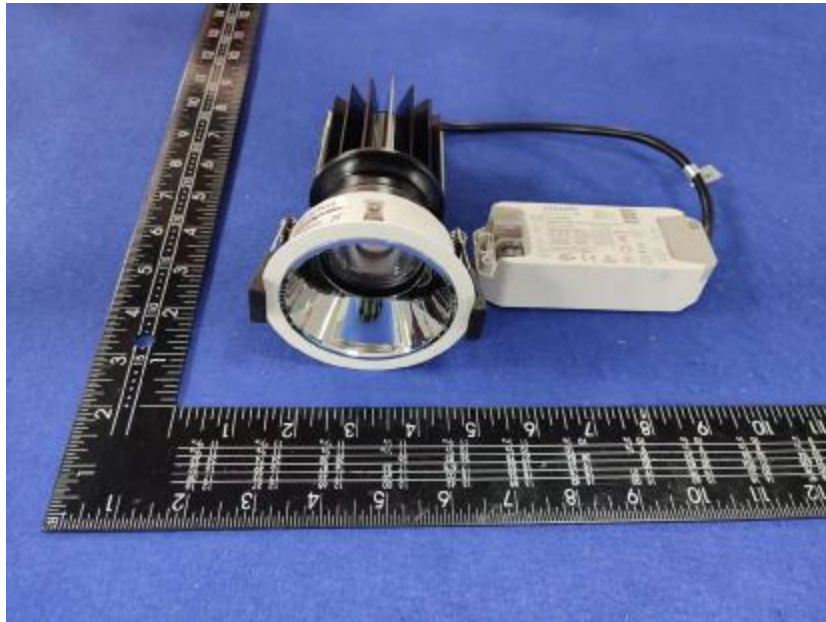


Luminaire Photograph



Light Output Ratio:	83.6%	
Luminaire Power:	20.76 W	
SHR Nominal:	0.50	Calculated using the TM5
SHR Maximum:	0.50	fine grid method.

C Range: 0 - 360DEG
C Interval: 30.0DEG
Test Speed: HIGH
Temperature: 25.3DEG
Operators: Zoe
Test Date: 2022-2-26

g Range: 0 - 180DEG
g Interval: 1.0DEG
Test System: EVERFINE GO-SPEX500_V1 SYSTEM V2.00.416
Humidity: 65.0%
Test Distance: 3.160m [K=1.0000]
Remarks: LAMP: CMU1013-0000-000N0U0A30G Ra:90
LENS: PM-1083A 24R
DRIVER: 9290 028 089 500mA
30minutes warm-up

LUMINOUS INTENSITY DISTRIBUTION DIAGRAM

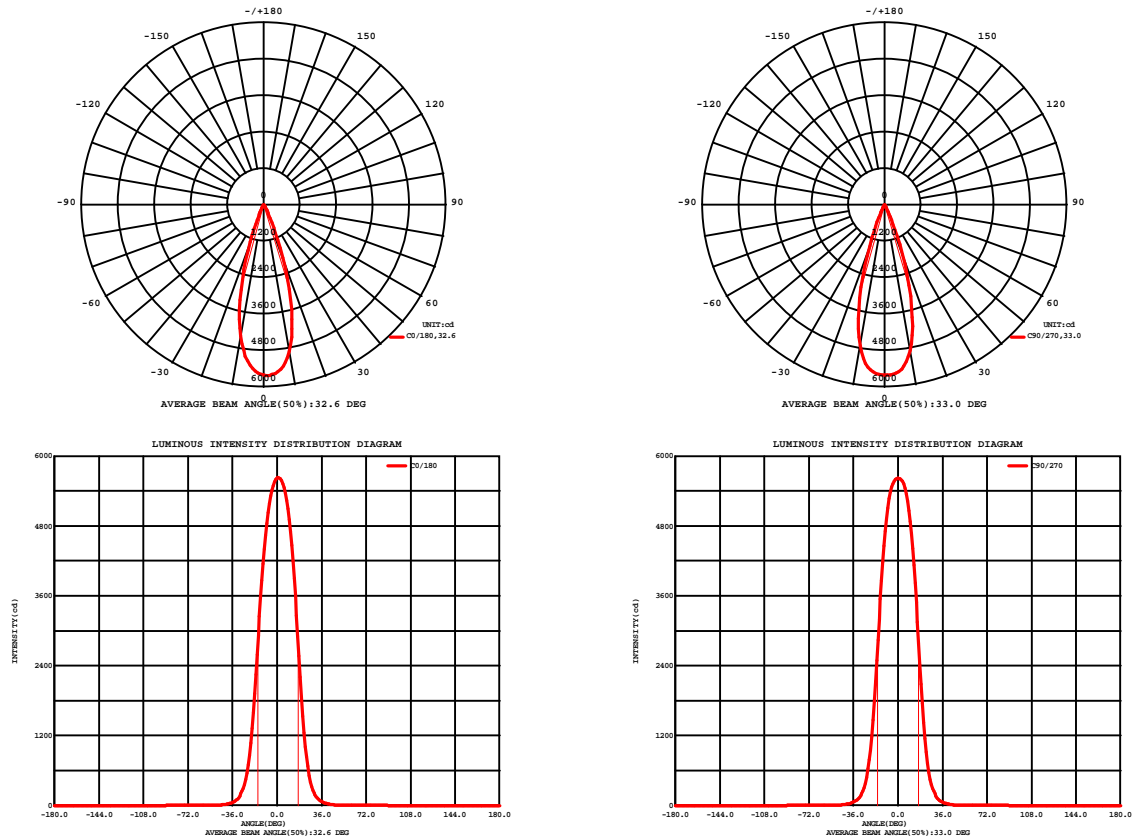


Fig. C0/C180

Fig. C90/C270

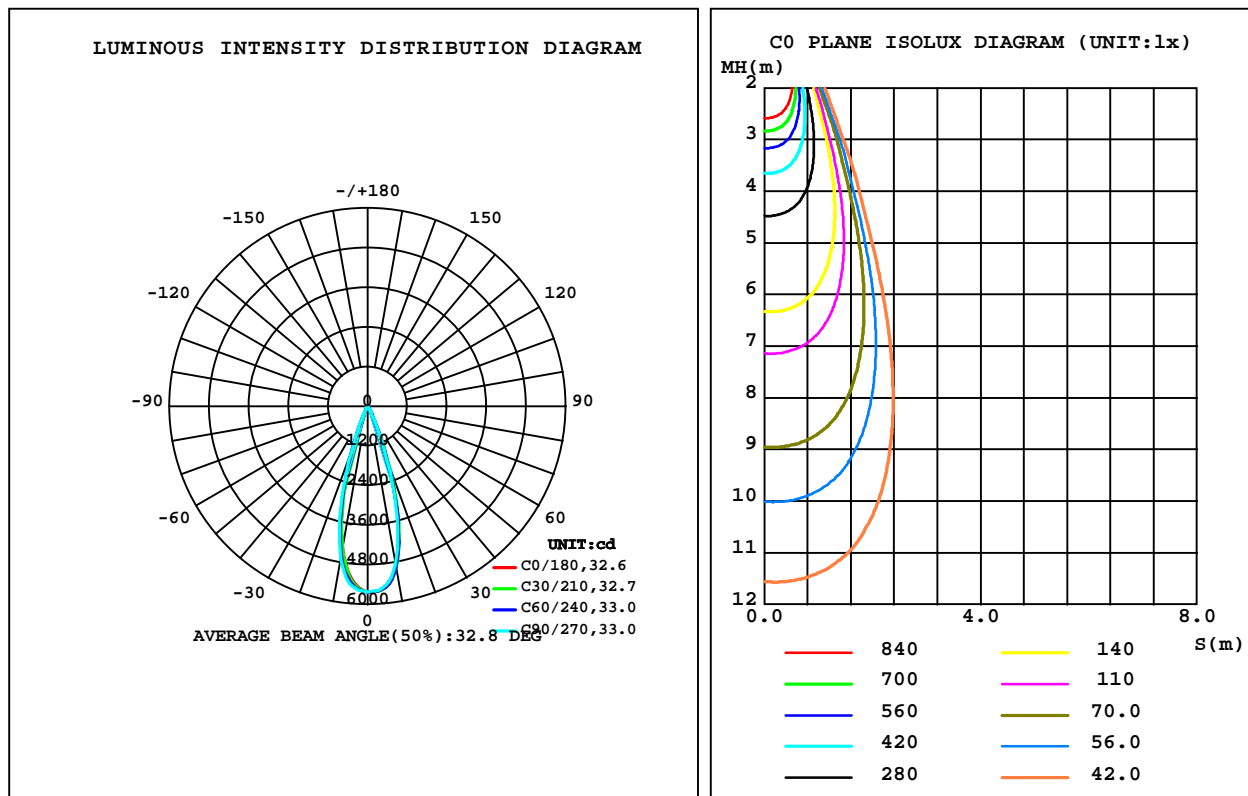
C Range: 0 - 360DEG
C Interval: 30.0DEG
Test Speed: HIGH
Temperature: 25.3DEG
Operators: Zoe
Test Date: 2022-2-26

Range: 0 - 180DEG
Interval: 1.0DEG
Test System: EVERFINE GO-SPEX500_V1 SYSTEM V2.00.416
Humidity: 65.0%
Test Distance: 3.160m [K=1.0000]
Remarks: LAMP: CMU1013-0000-000N0U0A30G Ra: 90
LENS: PM-1083A 24R
DRIVER: 9290 028 089 500mA
30minutes warm-up

LUMINAIRE PHOTOMETRIC TEST REPORT

Test:U:220.30V I:0.0972A P:20.758W PF:0.9663 Freq:49.99Hz Lamp Flux:2048.03x1 lm		
NAME: 2118.532-ACOT-37	TYPE:	WEIGHT:
SPEC.:3000K	DIM.:	SERIAL No.:2202260110
MFR.: RISE	SUR.:0.003316625m2	Shielding Angle:

DATA OF LAMP		PHOTOMETRIC DATA Eff: 82.52 lm/W			
MODEL	CREE	I _{max} (cd)	5631	S/MH(C0/180)	0.48
NOMINAL POWER(W)	20	LOR(%)	83.6	S/MH(C90/270)	0.50
RATED VOLTAGE(V)	220	TOTAL FLUX(lm)	1712.9	h UP,DN(C0-180)	0.0,43.8
NOMINAL FLUX(lm)	2048.03	CIE CLASS	DIRECT	h UP,DN(C180-360)	0.0,39.8
LAMPS INSIDE	1	h up(%)	0.0	CIBSE SHR NOM	0.50
TEST VOLTAGE(V)	220	h down(%)	83.6	CIBSE SHR MAX	0.50



C Range: 0 - 360DEG
C Interval: 30.0DEG
Test Speed: HIGH
Temperature:25.3DEG
Operators:Zoe
Test Date:2022-2-26

g Range: 0 - 180DEG
Interval: 1.0DEG
Test System:EVERFINE GO-SPEX500_V1 SYSTEM V2.00.416
Humidity:65.0%
Test Distance:3.160m [K=1.0000]
Remarks: LAMP:CMU1013-0000-000N0U0A30G Ra:90
LENS:PM-1083A 24R
DRIVER:9290 028 089 500mA
30minutes warm-up

ZONAL FLUX DIAGRAM

ZONAL FLUX DIAGRAM:

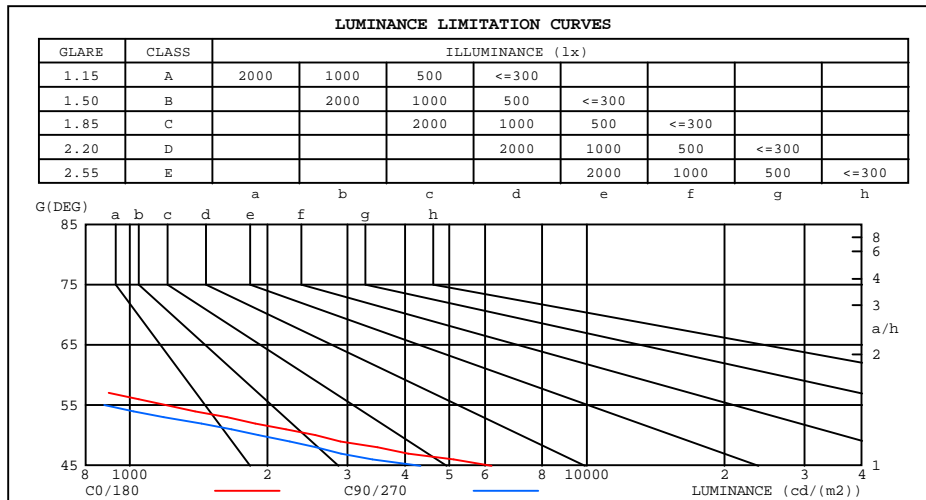
g	C0	C45	C90	C135	C180	C225	C270	C315	g	F zone	F total	%lum,lamp
10	4907	4974	4875	4622	4402	4506	4708	4785	0- 10	497.8	497.8	29.1,24.3
20	1860	1875	1750	1515	1320	1297	1464	1641	10- 20	870.2	1368	79.9,66.8
30	215.2	213.0	199.7	181.7	157.9	146.0	165.7	188.3	20- 30	283.1	1651	96.4,80.6
40	34.96	32.95	28.60	26.28	25.18	24.82	27.52	30.29	30- 40	49.54	1701	99.3,83
50	5.440	4.859	4.079	3.849	3.803	4.204	4.645	5.070	40- 50	9.899	1711	99.9,83.5
60	0.9771	1.002	0.8879	0.7420	0.7966	0.9555	0.9400	0.9754	50- 60	1.905	1712	100,83.6
70	0.0474	0.0319	0.0345	0.0306	0.0477	0.0336	0.0397	0.0300	60- 70	0.3655	1713	100,83.6
80	0.0523	0.0247	0.0372	0.0280	0.1630	0.0321	0.0427	0.0304	70- 80	0.0392	1713	100,83.6
90	0	0	0	0	0	0	0	0	80- 90	0.0383	1713	100,83.6
100	0	0	0	0	0	0	0	0	90-100	0	1713	100,83.6
110	0	0	0	0	0	0	0	0	100-110	0	1713	100,83.6
120	0	0	0	0	0	0	0	0	110-120	0	1713	100,83.6
130	0	0	0	0	0	0	0	0	120-130	0	1713	100,83.6
140	0	0	0	0	0	0	0	0	130-140	0	1713	100,83.6
150	0	0	0	0	0	0	0	0	140-150	0	1713	100,83.6
160	0	0	0	0	0	0	0	0	150-160	0	1713	100,83.6
170	0	0	0	0	0	0	0	0	160-170	0	1713	100,83.6
180	0	0	0	0	0	0	0	0	170-180	0	1713	100,83.6
DEG	LUMINOUS INTENSITY:cd									UNIT:lm		

C Range: 0 - 360DEG
C Interval: 30.0DEG
Test Speed: HIGH
Temperature:25.3DEG
Operators:Zoe
Test Date:2022-2-26

g Range: 0 - 180DEG
Interval: 1.0DEG
Test System:EVERFINE GO-SPEX500_V1 SYSTEM V2.00.416
Humidity:65.0%
Test Distance:3.160m [K=1.0000]
Remarks: LAMP:CMU1013-0000-000N0U0A30G Ra:90
LENS:PM-1083A 24R
DRIVER:9290 028 089 500mA
30minutes warm-up

LUMINANCE LIMITATION CURVES

Test:U:220.30V I:0.0972A P:20.758W PF:0.9663 Freq:49.99Hz Lamp Flux:2048.03x1 lm		
NAME: 2118.532-ACOT-37	TYPE:	WEIGHT:
SPEC.:3000K	DIM.:	SERIAL No.:2202260110
MFR.: RISE	SUR.:0.003316625m2	Shielding Angle:



LUMINANCE cd/(m2)		
G(180)	C0/180	C90/270
85	171	133
80	91	65
75	58	39
70	42	30
65	397	44
60	589	536
55	1197	880
50	2548	1916
45	6187	4329

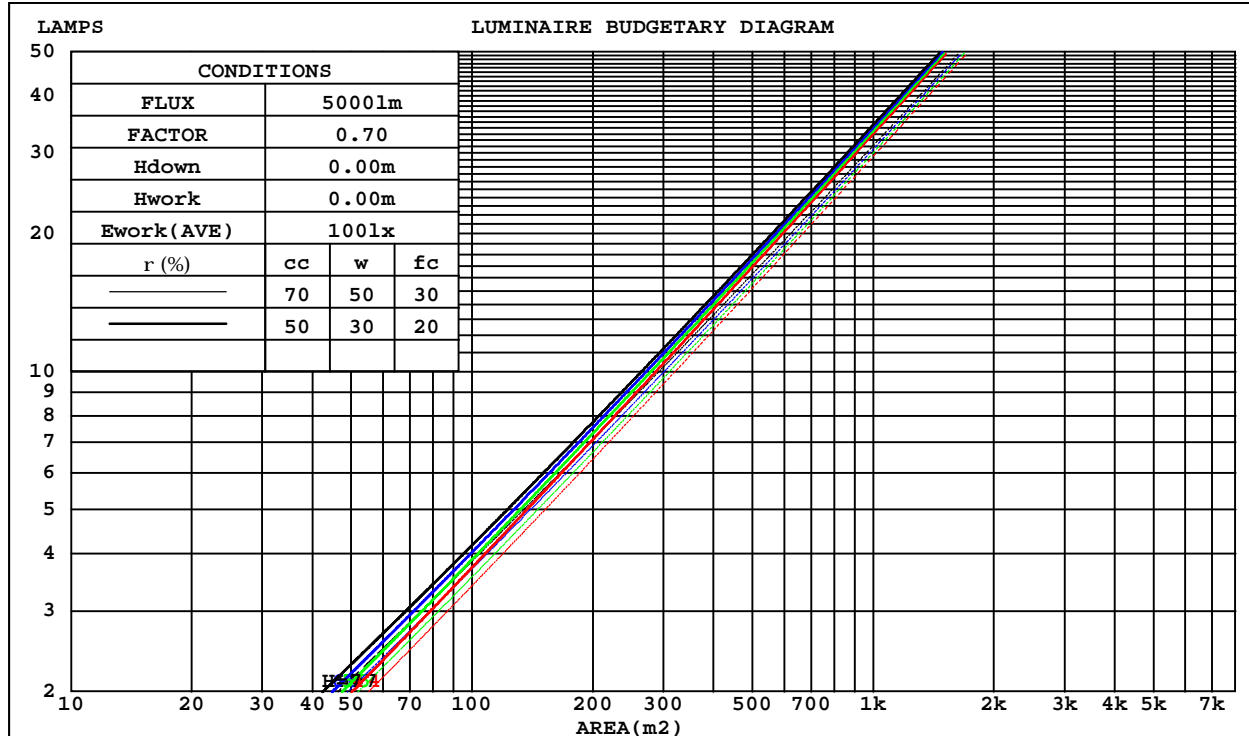
C Range: 0 - 360DEG
C Interval: 30.0DEG
Test Speed: HIGH
Temperature:25.3DEG
Operators:Zoe
Test Date:2022-2-26

G Range: 0 - 180DEG
G Interval: 1.0DEG
Test System:EVERFINE GO-SPEX500_V1 SYSTEM V2.00.416
Humidity:65.0%
Test Distance:3.160m [K=1.0000]
Remarks: LAMP:CMU1013-0000-000N0U0A30G Ra:90
LENS:PM-1083A 24R
DRIVER:9290 028 089 500mA
30minutes warm-up

CU AND LUMINAIRE BUDGETARY ESTIMATE DIAGRAM

Test:U:220.30V I:0.0972A P:20.758W PF:0.9663 Freq:49.99Hz Lamp Flux:2048.03x1 lm		
NAME: 2118.532-ACOT-37	TYPE:	WEIGHT:
SPEC.:3000K	DIM.:	SERIAL No.:2202260110
MFR.: RISE	SUR.:0.003316625m2	Shielding Angle:

rcc	80%			70%			50%			30%			10%			0
rw	50%	30%	10%	50%	30%	10%	50%	30%	10%	50%	30%	10%	50%	30%	10%	0
r fc	20%			20%			20%			20%			20%			0
RCR	RCR:Room Cavity Ratio															



C Range: 0 - 360DEG
C Interval: 30.0DEG
Test Speed: HIGH
Temperature:25.3DEG
Operators:Zoe
Test Date:2022-2-26

g Range: 0 - 180DEG
Interval: 1.0DEG
Test System:EVERFINE GO-SPEX500_V1 SYSTEM V2.00.416
Humidity:65.0%
Test Distance:3.160m [K=1.0000]
Remarks: LAMP:CMU1013-0000-000N0U0A30G Ra:90
LENS:PM-1083A 24R
DRIVER:9290 028 089 500mA
30minutes warm-up

WEC AND CCEC

Test:U:220.30V I:0.0972A P:20.758W PF:0.9663 Freq:49.99Hz Lamp Flux:2048.03x1 lm		
NAME: 2118.532-ACOT-37	TYPE:	WEIGHT:
SPEC.:3000K	DIM.:	SERIAL No.:2202260110
MFR.: RISE	SUR.:0.003316625m2	Shielding Angle:

rcc	80%			70%			50%			30%			10%			0
rw	50%	30%	10%	50%	30%	10%	50%	30%	10%	50%	30%	10%	50%	30%	10%	0
rfc	20%			20%			20%			20%			20%			0
RCR	RCR:Room Cavity Ratio Wall Exitance Coefficients(WEC)															
0.0																
1.0	.116	.066	.021	.110	.063	.020	.100	.057	.018	.091	.052	.017	.082	.047	.015	
2.0	.108	.059	.018	.103	.057	.017	.095	.053	.016	.087	.049	.015	.079	.045	.014	
3.0	.101	.054	.016	.097	.052	.016	.090	.049	.015	.083	.045	.014	.077	.043	.013	
4.0	.094	.049	.014	.091	.048	.014	.085	.045	.014	.080	.043	.013	.074	.040	.012	
5.0	.089	.045	.013	.086	.044	.013	.081	.042	.012	.077	.040	.012	.072	.039	.012	
6.0	.085	.042	.012	.082	.042	.012	.078	.040	.012	.074	.038	.011	.070	.037	.011	
7.0	.081	.040	.011	.079	.039	.011	.075	.038	.011	.071	.036	.011	.068	.035	.010	
8.0	.077	.038	.011	.075	.037	.010	.072	.036	.010	.069	.035	.010	.066	.034	.010	
9.0	.074	.036	.010	.072	.035	.010	.069	.034	.010	.066	.033	.010	.064	.032	.009	
10.0	.071	.034	.009	.069	.034	.009	.067	.033	.009	.064	.032	.009	.062	.031	.009	

rcc	80%			70%			50%			30%			10%			0
rw	50%	30%	10%	50%	30%	10%	50%	30%	10%	50%	30%	10%	50%	30%	10%	0
rfc	20%			20%			20%			20%			20%			0
RCR	RCR:Room Cavity Ratio						Ceiling Cavity Exitance Coefficients(CCEC)									
0.0	.159	.159	.159	.136	.136	.136	.093	.093	.093	.053	.053	.053	.017	.017	.017	
1.0	.141	.132	.124	.121	.113	.106	.082	.078	.074	.047	.045	.043	.015	.015	.014	
2.0	.126	.111	.098	.108	.096	.085	.074	.066	.059	.043	.038	.035	.014	.012	.011	
3.0	.113	.095	.080	.097	.082	.069	.067	.057	.049	.039	.033	.029	.012	.011	.009	
4.0	.103	.082	.066	.088	.071	.057	.061	.049	.040	.035	.029	.024	.011	.009	.008	
5.0	.094	.072	.055	.081	.062	.048	.056	.043	.034	.032	.025	.020	.010	.008	.007	
6.0	.087	.063	.046	.075	.055	.040	.052	.038	.029	.030	.023	.017	.010	.007	.006	
7.0	.081	.057	.039	.070	.049	.034	.048	.034	.024	.028	.020	.015	.009	.007	.005	
8.0	.076	.051	.034	.065	.044	.030	.045	.031	.021	.026	.018	.013	.008	.006	.004	
9.0	.071	.046	.030	.061	.040	.026	.042	.028	.018	.025	.017	.011	.008	.005	.004	
10.0	.067	.042	.026	.058	.037	.023	.040	.026	.016	.023	.015	.010	.008	.005	.003	

C Range: 0 - 360DEG
 C Interval: 30.0DEG
 Test Speed: HIGH
 Temperature:25.3DEG
 Operators:Zoe
 Test Date:2022-2-26

g Range: 0 - 180DEG
 g Interval: 1.0DEG
 Test System:EVERFINE GO-SPEX500_V1 SYSTEM V2.00.416
 Humidity:65.0%
 Test Distance:3.160m [K=1.0000]
 Remarks: LAMP:CMU1013-0000-000N0U0A30G Ra:90
 LENS:PM-1083A 24R
 DRIVER:9290 028 089 500mA
 30minutes warm-up

UGR(Unified Glare Rating) Table

Test:U:220.30V I:0.0972A P:20.758W PF:0.9663 Freq:49.99Hz Lamp Flux:2048.03x1 lm										
NAME: 2118.532-ACOT-37					TYPE:			WEIGHT:		
SPEC.:3000K					DIM.:			SERIAL No.:2202260110		
MFR.: RISE					SUR.:0.003316625m2			Shielding Angle:		
ceiling/cavity	0.7	0.7	0.5	0.5	0.3	0.7	0.7	0.5	0.5	0.3
walls	0.5	0.3	0.5	0.3	0.3	0.5	0.3	0.5	0.3	0.3
working plane	0.2	0.2	0.2	0.2	0.2	0.2	0.2	0.2	0.2	0.2
Room dimensions	Viewed crosswise					Viewed endwise				
x = 2H y = 2H	9.3	10.0	9.5	10.1	10.3	8.4	9.1	8.6	9.3	9.4
3H	9.2	9.8	9.4	10.0	10.2	8.3	8.9	8.5	9.1	9.3
4H	9.1	9.7	9.3	9.9	10.1	8.2	8.8	8.5	9.0	9.2
6H	9.0	9.6	9.3	9.8	10.0	8.1	8.7	8.4	8.9	9.2
8H	9.0	9.5	9.3	9.7	10.0	8.1	8.6	8.4	8.9	9.1
12H	8.9	9.4	9.2	9.7	10.0	8.0	8.6	8.3	8.8	9.1
4H 2H	9.1	9.7	9.4	9.9	10.1	8.2	8.8	8.5	9.0	9.2
3H	8.9	9.4	9.2	9.7	10.0	8.0	8.6	8.4	8.8	9.1
4H	8.8	9.3	9.2	9.6	9.9	8.0	8.4	8.3	8.7	9.0
6H	8.7	9.1	9.1	9.5	9.8	7.8	8.3	8.2	8.6	8.9
8H	8.7	9.1	9.1	9.4	9.8	7.8	8.2	8.2	8.5	8.9
12H	8.6	9.0	9.0	9.3	9.7	7.7	8.1	8.1	8.5	8.9
8H 4H	8.7	9.1	9.1	9.4	9.8	7.8	8.2	8.2	8.5	8.9
6H	8.6	8.9	9.0	9.3	9.7	7.7	8.0	8.1	8.4	8.8
8H	8.5	8.8	8.9	9.2	9.6	7.6	7.9	8.1	8.3	8.8
12H	8.4	8.7	8.9	9.1	9.6	7.6	7.8	8.0	8.2	8.7
12H 4H	8.6	9.0	9.0	9.3	9.7	7.7	8.1	8.1	8.5	8.9
6H	8.5	8.8	8.9	9.2	9.6	7.6	7.9	8.1	8.3	8.8
8H	8.4	8.7	8.9	9.1	9.6	7.6	7.8	8.0	8.2	8.7
Variations with the observer position at spacings:										
S = 1.0H	+ 3.6 / -13.7					+ 3.5 / -14.3				
1.5H	+ 5.9 / -10.8					+ 5.9 / -10.3				
2.0H	+ 7.0 / - 8.1					+ 6.3 / - 7.6				

CIE Pub.117, 2048 lm Total Lamp Luminous Flux Corrected ($8\log(F/F_0) = 2.5$)
Area: 0.00331663 m2

C Range: 0 - 360DEG
C Interval: 30.0DEG
Test Speed: HIGH
Temperature:25.3DEG
Operators:Zoe
Test Date:2022-2-26

g Range: 0 - 180DEG
g Interval: 1.0DEG
Test System:EVERFINE GO-SPEX500_V1 SYSTEM V2.00.416
Humidity:65.0%
Test Distance:3.160m [K=1.0000]
Remarks: LAMP:CMU1013-0000-000N0U0A30G Ra:90
LENS:PM-1083A 24R
DRIVER:9290 028 089 500mA
30minutes warm-up

UTILIZATION FACTORS TABLE

Test:U:220.30V I:0.0972A P:20.758W PF:0.9663 Freq:49.99Hz Lamp Flux:2048.03x1 lm		
NAME: 2118.532-ACOT-37	TYPE:	WEIGHT:
SPEC.:3000K	DIM.:	SERIAL No.:2202260110
MFR.: RISE	SUR.:0.003316625m2	Shielding Angle:

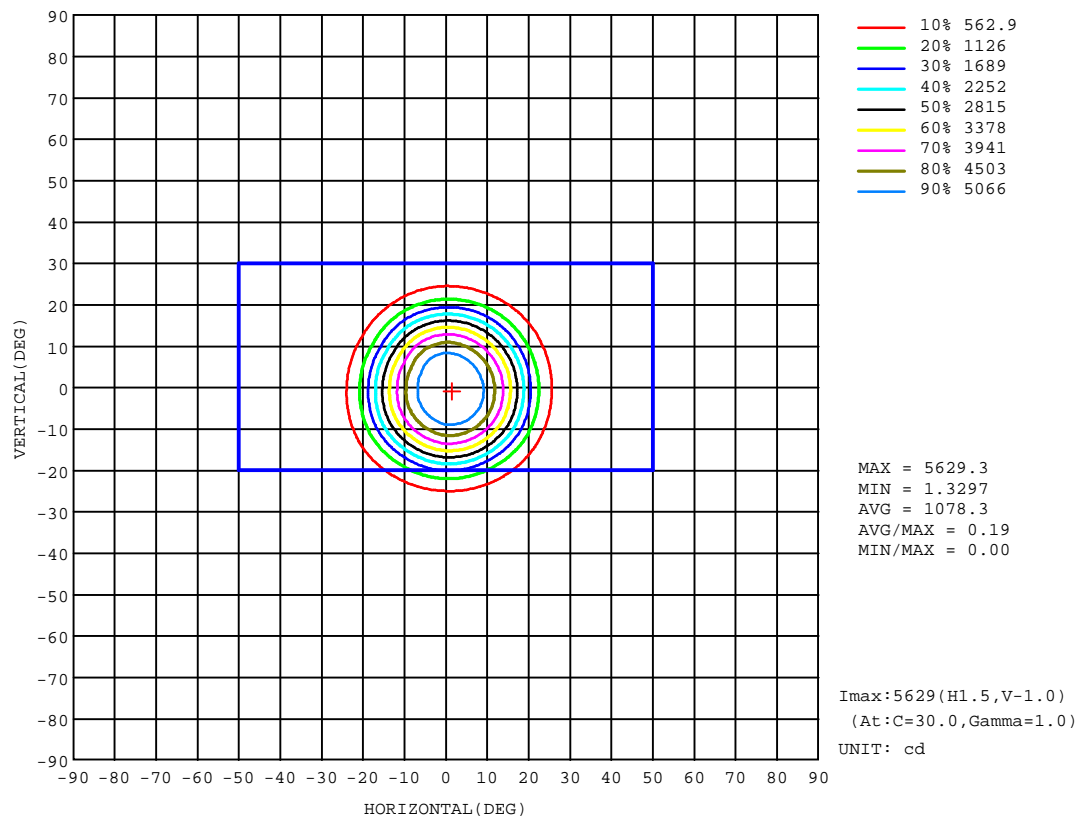
REFLECTANCE										
Ceiling	0.8	0.8	0.8	0.7	0.7	0.7	0.5	0.5	0.5	0
Walls	0.7	0.5	0.3	0.7	0.5	0.3	0.7	0.5	0.3	0
Working plane	0.2	0.2	0.2	0.2	0.2	0.2	0.2	0.2	0.2	0
ROOM INDEX	UTILIZATION FACTORS(PERCENT) $k(RI) \times RCR = 5$									
k = 0.60	76	71	69	76	71	69	75	71	68	66
0.80	82	78	75	81	77	75	81	77	75	72
1.00	85	81	78	84	81	78	83	80	78	75
1.25	88	84	82	87	84	81	86	83	81	77
1.50	90	87	84	89	86	84	87	85	83	79
2.00	92	89	86	91	88	86	89	86	84	80
2.50	93	90	88	92	89	87	89	87	86	81
3.00	94	92	90	93	91	89	90	88	87	82
4.00	96	94	92	94	92	91	91	90	89	83
5.00	97	95	94	95	94	92	92	91	90	84
ROOM INDEX	UF(total)									Direct
According to DIN EN 13032-2 2004			Suspended					SHRNOM = 1.25		

C Range: 0 - 360DEG
C Interval: 30.0DEG
Test Speed: HIGH
Temperature:25.3DEG
Operators:Zoe
Test Date:2022-2-26

g Range: 0 - 180DEG
g Interval: 1.0DEG
Test System:EVERFINE GO-SPEX500_V1 SYSTEM V2.00.416
Humidity:65.0%
Test Distance:3.160m [K=1.0000]
Remarks: LAMP:CMU1013-0000-000N0U0A30G Ra:90
LENS:PM-1083A 24R
DRIVER:9290 028 089 500mA
30minutes warm-up

ISOCANDELA DIAGRAM

Test:U:220.30V I:0.0972A P:20.758W PF:0.9663 Freq:49.99Hz Lamp Flux:2048.03x1 lm		
NAME: 2118.532-ACOT-37	TYPE:	WEIGHT:
SPEC.:3000K	DIM.:	SERIAL No.:2202260110
MFR.: RISE	SUR.:0.003316625m2	Shielding Angle:

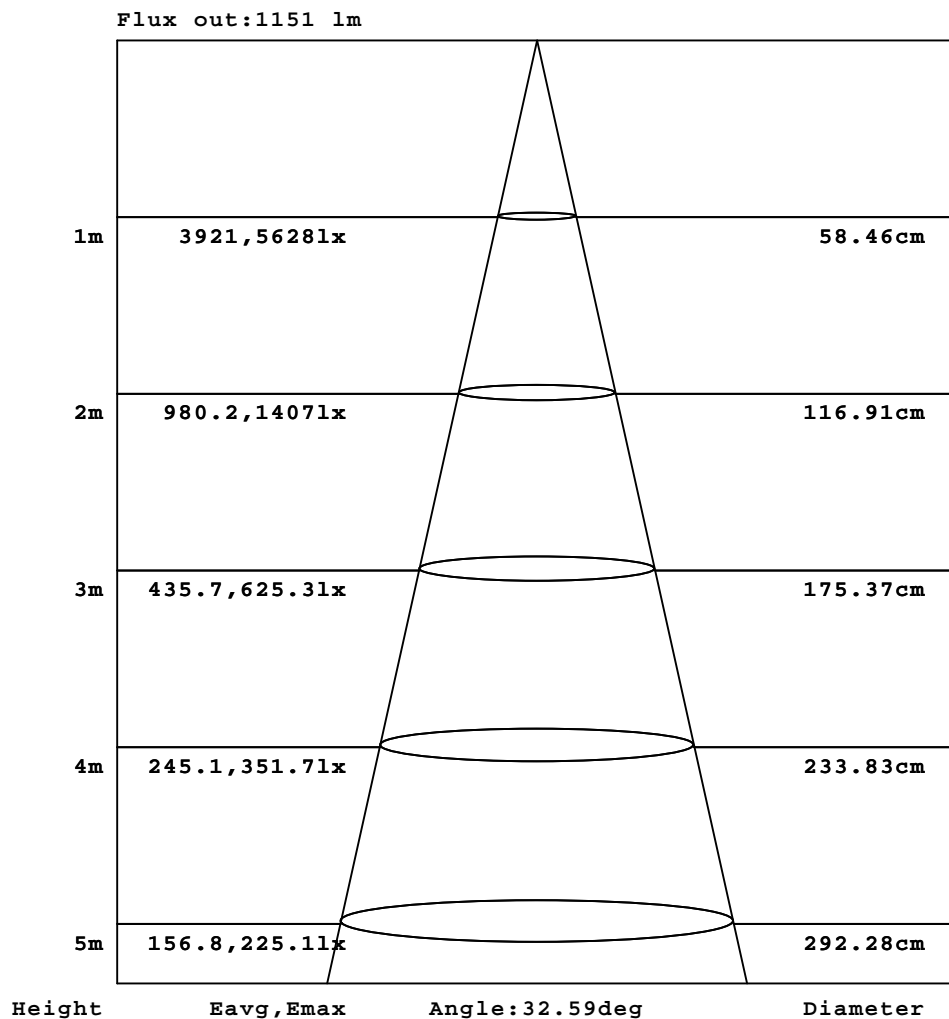


C Range: 0 - 360DEG
C Interval: 30.0DEG
Test Speed: HIGH
Temperature:25.3DEG
Operators:Zoe
Test Date:2022-2-26

g Range: 0 - 180DEG
Interval: 1.0DEG
Test System:EVERFINE GO-SPEX500_V1 SYSTEM V2.00.416
Humidity:65.0%
Test Distance:3.160m [K=1.0000]
Remarks: LAMP:CMU1013-0000-000N0U0A30G Ra:90
LENS:PM-1083A 24R
DRIVER:9290 028 089 500mA
30minutes warm-up

AAI Figure

Test:U:220.30V I:0.0972A P:20.758W PF:0.9663 Freq:49.99Hz Lamp Flux:2048.03x1 lm		
NAME: 2118.532-ACOT-37	TYPE:	WEIGHT:
SPEC.:3000K	DIM.:	SERIAL No.:2202260110
MFR.: RISE	SUR.:0.003316625m2	Shielding Angle:



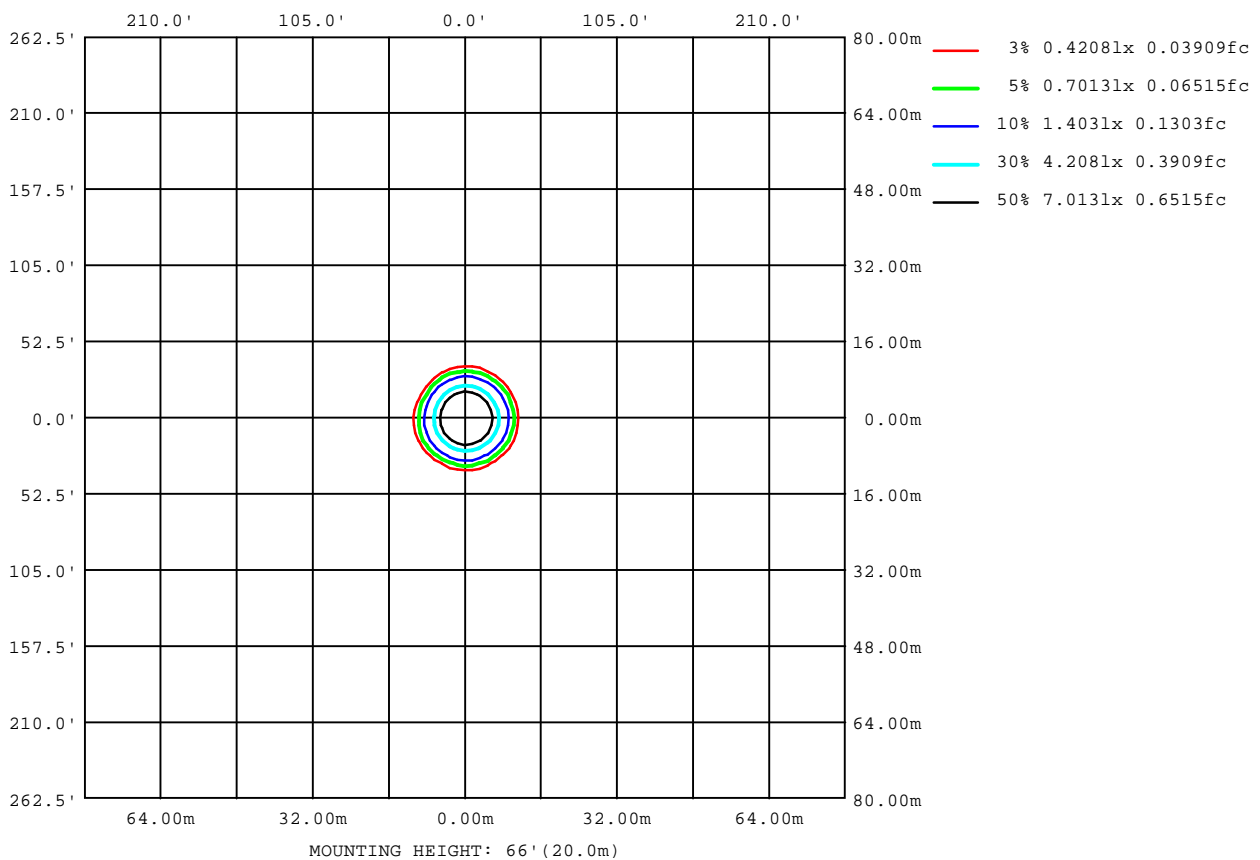
Note:The Curves indicate the illuminated area and the average illumination when the luminaire is at different distance.

C Range: 0 - 360DEG
C Interval: 30.0DEG
Test Speed: HIGH
Temperature:25.3DEG
Operators:Zoe
Test Date:2022-2-26

g Range: 0 - 180DEG
Interval: 1.0DEG
Test System:EVERFINE GO-SPEX500_V1 SYSTEM V2.00.416
Humidity:65.0%
Test Distance:3.160m [K=1.0000]
Remarks: LAMP:CMU1013-0000-000N0U0A30G Ra:90
LENS:PM-1083A 24R
DRIVER:9290 028 089 500mA
30minutes warm-up

ISOLUX DIAGRAM

Test:U:220.30V I:0.0972A P:20.758W PF:0.9663 Freq:49.99Hz Lamp Flux:2048.03x1 lm		
NAME: 2118.532-ACOT-37	TYPE:	WEIGHT:
SPEC.:3000K	DIM.:	SERIAL No.:2202260110
MFR.: RISE	SUR.:0.003316625m2	Shielding Angle:



C Range: 0 - 360DEG
C Interval: 30.0DEG
Test Speed: HIGH
Temperature:25.3DEG
Operators:Zoe
Test Date:2022-2-26

g Range: 0 - 180DEG
g Interval: 1.0DEG
Test System:EVERFINE GO-SPEX500_V1 SYSTEM V2.00.416
Humidity:65.0%
Test Distance:3.160m [K=1.0000]
Remarks: LAMP:CMU1013-0000-000N0U0A30G Ra:90
LENS:PM-1083A 24R
DRIVER:9290 028 089 500mA
30minutes warm-up

LED Avg.L Report

Test:U:220.30V I:0.0972A P:20.758W PF:0.9663 Freq:49.99Hz Lamp Flux:2048.03x1 lm		
NAME: 2118.532-ACOT-37	TYPE:	WEIGHT:
SPEC.:3000K	DIM.:	SERIAL No.:2202260110
MFR.: RISE	SUR.:0.003316625m2	Shielding Angle:

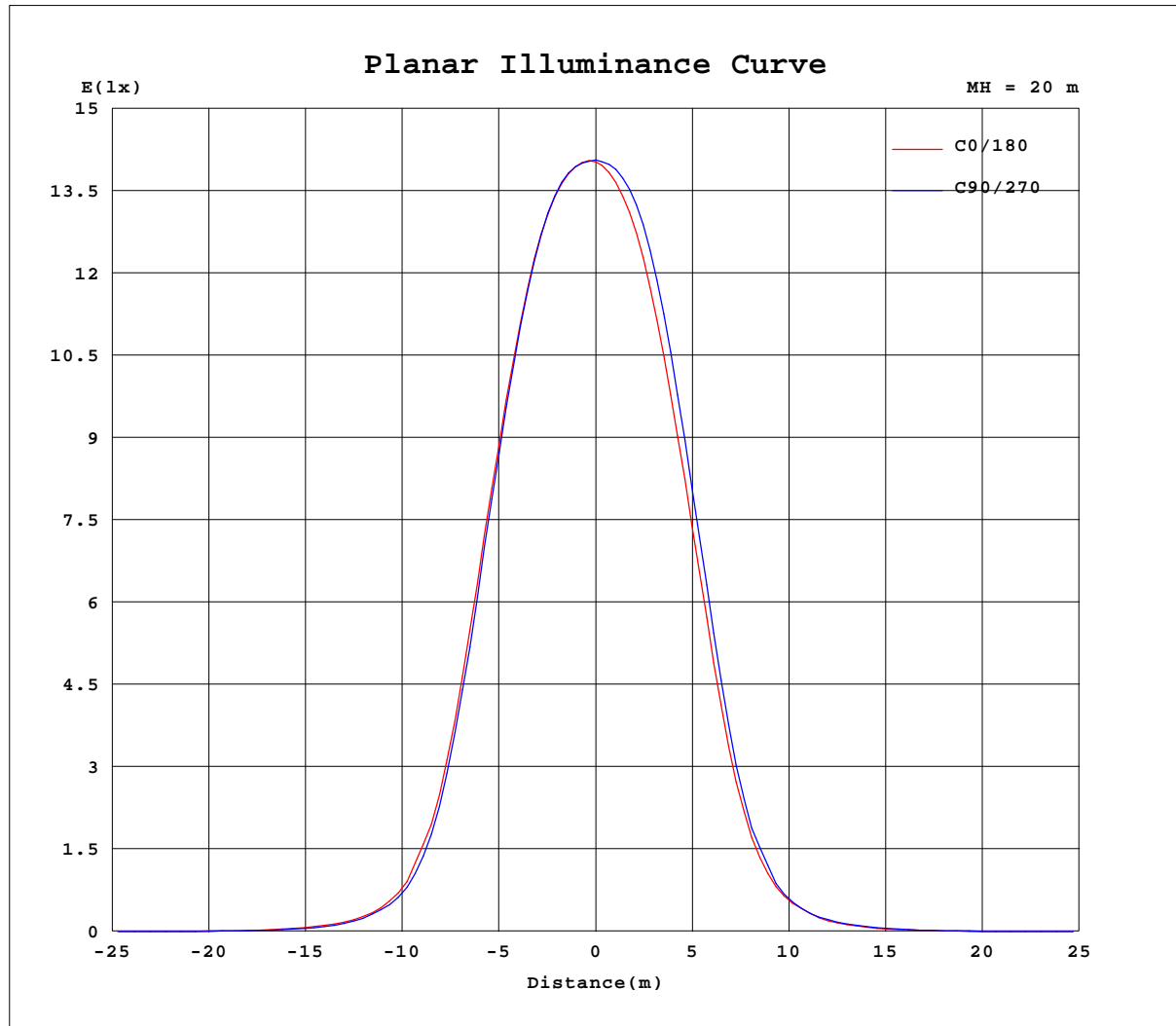
AvgL	cd/m2
L_0~180(65)av	217
L_0~180(75)av	60
L_0~180(85)av	171
L_90~270(65)av	179
L_90~270(75)av	42
L_90~270(85)av	145
L_45(65)av	203
L_45(75)av	33
L_45(85)av	80

Standard: GB/T 29293-2012

C Range: 0 - 360DEG
C Interval: 30.0DEG
Test Speed: HIGH
Temperature:25.3DEG
Operators:Zoe
Test Date:2022-2-26

g Range: 0 - 180DEG
Interval: 1.0DEG
Test System:EVERFINE GO-SPEX500_V1 SYSTEM V2.00.416
Humidity:65.0%
Test Distance:3.160m [K=1.0000]
Remarks: LAMP:CMU1013-0000-000N0U0A30G Ra:90
LENS:PM-1083A 24R
DRIVER:9290 028 089 500mA
30minutes warm-up

Planar Illuminance Curve



C Range: 0 - 360DEG
 C Interval: 30.0DEG
 Test Speed: HIGH
 Temperature: 25.3DEG
 Operators: Zoe
 Test Date: 2022-2-26

deg Range: 0 - 180DEG
 deg Interval: 1.0DEG
 Test System: EVERFINE GO-SPEX500_V1 SYSTEM V2.00.416
 Humidity: 65.0%
 Test Distance: 3.160m [K=1.0000]
 Remarks: LAMP: CMU1013-0000-000N0U0A30G Ra:90
 LENS: PM-1083A 24R
 DRIVER: 9290 028 089 500mA
 30minutes warm-up

LUMINOUS DISTRIBUTION INTENSITY DATA

Test:U:220.30V I:0.0972A P:20.758W PF:0.9663 Freq:49.99Hz Lamp Flux:2048.03x1 lm		
NAME: 2118.532-ACOT-37	TYPE:	WEIGHT:
SPEC.:3000K	DIM.:	SERIAL No.:2202260110
MFR.: RISE	SUR.:0.003316625m2	Shielding Angle:

Table--1

UNIT: cd

C(°) g (°)	0	30	60	90	120	150	180	210	240	270	300	330						
0	5617	5617	5617	5617	5617	5617	5617	5617	5617	5617	5617	5617						
5	5521	5552	5547	5517	5437	5370	5310	5335	5414	5467	5471	5492						
10	4907	4984	4963	4875	4695	4548	4402	4406	4607	4708	4749	4822						
15	3591	3676	3600	3493	3267	3119	2920	2857	3063	3196	3283	3433						
20	1860	1945	1805	1750	1556	1475	1320	1221	1372	1464	1577	1704						
25	673	662	631	569	516	512	446	383	438	473	516	599						
30	215	228	198	200	176	187	158	137	155	166	187	190						
35	86.9	84.8	78.4	71.7	69.3	66.3	61.0	56.1	62.3	68.7	70.7	77.1						
40	35.0	35.0	30.9	28.6	26.5	26.1	25.2	23.6	26.0	27.5	29.6	31.0						
45	14.5	13.9	11.7	10.1	9.35	9.27	9.20	9.64	10.5	11.2	12.4	13.1						
50	5.44	5.20	4.52	4.08	3.87	3.83	3.80	3.93	4.48	4.64	4.96	5.18						
55	2.28	2.23	1.96	1.67	1.48	1.55	1.59	1.71	1.96	2.05	2.20	2.23						
60	0.98	1.02	0.98	0.89	0.70	0.79	0.80	0.98	0.93	0.94	0.95	1.00						
65	0.56	0.52	0.25	0.06	0.05	0.04	0.05	0.06	0.31	0.44	0.53	0.51						
70	0.05	0.03	0.03	0.03	0.03	0.03	0.05	0.04	0.03	0.04	0.03	0.03						
75	0.05	0.03	0.03	0.03	0.03	0.03	0.05	0.04	0.03	0.04	0.03	0.03						
80	0.05	0.02	0.03	0.04	0.03	0.03	0.16	0.04	0.03	0.04	0.03	0.04						
85	0.05	0.02	0.03	0.04	0.03	0.03	0.05	0.03	0.02	0.05	0.02	0.03						
90	0.00	0.00	0.00	0.00	0.00	0.00	0.00	0.00	0.00	0.00	0.00	0.00						
95	0.00	0.00	0.00	0.00	0.00	0.00	0.00	0.00	0.00	0.00	0.00	0.00						
100	0.00	0.00	0.00	0.00	0.00	0.00	0.00	0.00	0.00	0.00	0.00	0.00						
105	0.00	0.00	0.00	0.00	0.00	0.00	0.00	0.00	0.00	0.00	0.00	0.00						
110	0.00	0.00	0.00	0.00	0.00	0.00	0.00	0.00	0.00	0.00	0.00	0.00						
115	0.00	0.00	0.00	0.00	0.00	0.00	0.00	0.00	0.00	0.00	0.00	0.00						
120	0.00	0.00	0.00	0.00	0.00	0.00	0.00	0.00	0.00	0.00	0.00	0.00						
125	0.00	0.00	0.00	0.00	0.00	0.00	0.00	0.00	0.00	0.00	0.00	0.00						
130	0.00	0.00	0.00	0.00	0.00	0.00	0.00	0.00	0.00	0.00	0.00	0.00						
135	0.00	0.00	0.00	0.00	0.00	0.00	0.00	0.00	0.00	0.00	0.00	0.00						
140	0.00	0.00	0.00	0.00	0.00	0.00	0.00	0.00	0.00	0.00	0.00	0.00						
145	0.00	0.00	0.00	0.00	0.00	0.00	0.00	0.00	0.00	0.00	0.00	0.00						
150	0.00	0.00	0.00	0.00	0.00	0.00	0.00	0.00	0.00	0.00	0.00	0.00						
155	0.00	0.00	0.00	0.00	0.00	0.00	0.00	0.00	0.00	0.00	0.00	0.00						
160	0.00	0.00	0.00	0.00	0.00	0.00	0.00	0.00	0.00	0.00	0.00	0.00						
165	0.00	0.00	0.00	0.00	0.00	0.00	0.00	0.00	0.00	0.00	0.00	0.00						
170	0.00	0.00	0.00	0.00	0.00	0.00	0.00	0.00	0.00	0.00	0.00	0.00						
175	0.00	0.00	0.00	0.00	0.00	0.00	0.00	0.00	0.00	0.00	0.00	0.00						
180	0.00	0.00	0.00	0.00	0.00	0.00	0.00	0.00	0.00	0.00	0.00	0.00						

C Range: 0 - 360DEG
C Interval: 30.0DEG
Test Speed: HIGH
Temperature:25.3DEG
Operators:Zoe
Test Date:2022-2-26

g Range: 0 - 180DEG
g Interval: 1.0DEG
Test System:EVERFINE GO-SPEX500_V1 SYSTEM V2.00.416
Humidity:65.0%
Test Distance:3.160m [K=1.0000]
Remarks: LAMP:CMU1013-0000-000N0U0A30G Ra:90
LENS:PM-1083A 24R
DRIVER:9290 028 089 500mA
30minutes warm-up